



OSISKO DEVELOPMENT

## **OSISKO DEVELOPMENT INTERSECTS 2.19 G/T GOLD OVER 78.9 METERS AT SAPUCHI AND 1.55 G/T GOLD OVER 42.5 METERS AT GOLFO DE ORO; PROVIDES UPDATE ON THE NON-BROKERED PRIVATE PLACEMENT**

**MONTREAL, February 28, 2022** – Osisko Development Corp. ("**Osisko Development**" or the "**Company**") (TSX.V-ODV) is pleased to announce the final drilling results from the 2021 exploration and category conversion drill program campaign at its San Antonio Project in Sonora State, Mexico.

The Company is also pleased to report, further to its previously-announced non-brokered private placement (the "**Non-Brokered Placement**") of up to US\$110 million of subscription receipts of the Corporation ("**Subscription Receipts**"), that the Corporation expects to close a first tranche of the Non-Brokered Placement on March 4, 2022 for gross proceeds of approximately US\$67.3 million of Subscription Receipts.

The Corporation has also received subscription proceeds or expressions of interest for the remaining Subscription Receipts allotted under the up to US\$110 million Non-Brokered Placement, which Osisko Development expects to close, as a second tranche closing, in late March 2022. The Non-Brokered Placement is being completed on a "non-brokered" basis and no commission or finder's fee will be paid by Osisko Development in connection therewith.

### **San Antonio Drill Results Summary**

- A total of 27,900 meters were drilled in 177 holes in 2021. The objective of the drill program was to conduct exploration and resource drilling at a spacing of 25 meters and historic drilling validation for the three main target areas (Figure 1).
- This news releases encompasses all 6,550 meters in 33 holes from the Golfo de Oro Target: GO-DD-21-015 to GO-DD-21-174 inclusive (Figure 2) and the remaining assays from 8,050 meters in 76 holes at Sapuchi: SP-DD-21-060A to SP-DD-21-173 inclusive (Figure 4).
- Assay highlights from Golfo de Oro include **1.55 g/t Au and 2.32 g/t Ag over 42.50 meters** in hole GO-DD-21-111 and **2.47 g/t Au and 18.67 g/t Ag over 21.20 meters** in hole GO-DD-21-057 including a sample of **18.00 g/t Au and 43.90 g/t Ag** over 1.50 meters within the prospective hydrothermal breccia (Figure 2).
- Assay highlights from Sapuchi include **2.19 g/t Au and 4.12 g/t Ag over 78.90 meters** in hole SP-DD-21-102 including a high-grade sample of **21.30 g/t Au and 11.75 g/t Ag** over 3.20 meters (Figure 4).
- A total of 18 intervals below assayed greater than 1.00 g/t Au over at least 10.0 meters.
- Gold mineralization is hosted within altered hydrothermal breccia and sediments, as stockwork quartz veins and veinlets and adjacent to intrusions and fault structures.
- Detailed drilling results are presented in Table 1, drillhole locations are presented in Table 2, and drillhole cross sections are presented in Figures 3 and 5.

## Assay Highlights

- **0.81 g/t Au and 0.79 g/t Ag** over 19.50 meters in hole GO-DD-21-033
- **9.59 g/t Au and 7.78 g/t Ag** over 1.50 meters in hole GO-DD-21-049
- **2.47 g/t Au and 18.67 g/t Ag** over 21.20 meters in hole GO-DD-21-057 including
- **18.00 g/t Au and 43.90 g/t Ag** over 1.50 meters
- **0.86 g/t Au and 0.62 g/t Ag** over 35.65 meters in hole GO-DD-21-094
- **1.45 g/t Au and 2.05 g/t Ag** over 31.25 meters in hole GO-DD-21-110
- **1.55 g/t Au and 2.32 g/t Ag** over 42.50 meters in hole GO-DD-21-111
- **0.87 g/t Au and 1.62 g/t Ag** over 21.00 meters in hole GO-DD-21-161
- **3.58 g/t Au and 2.71 g/t Ag** over 5.30 meters in hole SP-DD-21-060A
- **1.37 g/t Au and 1.84 g/t Ag** over 14.80 meters in hole SP-DD-21-065
- **0.93 g/t Au and 6.76 g/t Ag** over 26.65 meters in hole SP-DD-21-081
- **2.35 g/t Au and 3.99 g/t Ag** over 8.50 meters in hole SP-DD-21-081
- **2.49 g/t Au and 8.32 g/t Ag** over 8.80 meters in hole SP-DD-21-082
- **1.00 g/t Au and 14.32 g/t Ag** over 40.80 meters in hole SP-DD-21-087
- **0.94 g/t Au and 7.37 g/t Ag** over 17.55 meters in hole SP-DD-21-088
- **1.06 g/t Au and 3.88 g/t Ag** over 60.45 meters in hole SP-DD-21-089
- **1.39 g/t Au and 1.79 g/t Ag** over 10.20 meters in hole SP-DD-21-093
- **0.96 g/t Au and 1.08 g/t Ag** over 13.50 meters in hole SP-DD-21-096
- **1.07 g/t Au and 2.31 g/t Ag** over 22.95 meters in hole SP-DD-21-096
- **1.60 g/t Au and 1.92 g/t Ag** over 25.45 meters in hole SP-DD-21-098
- **2.39 g/t Au and 3.36 g/t Ag** over 10.50 meters in hole SP-DD-21-099 including
- **10.20 g/t Au and 5.91 g/t Ag** over 1.30 meters
- **2.19 g/t Au and 4.12 g/t Ag** over 78.90 meters in hole SP-DD-21-102 including
- **21.30 g/t Au and 11.75 g/t Ag** over 3.20 meters
- **8.28 g/t Au and 1.92 g/t Ag** over 2.35 meters in hole SP-DD-21-104
- **1.41 g/t Au and 1.09 g/t Ag** over 18.30 meters in hole SP-DD-21-108
- **1.82 g/t Au and 2.18 g/t Ag** over 7.50 meters in hole SP-DD-21-112
- **8.56 g/t Au and 4.42 g/t Ag** over 1.70 meters in hole SP-DD-21-124 including
- **16.60 g/t Au and 5.34 g/t Ag** over 0.70 meter
- **0.96 g/t Au and 2.51 g/t Ag** over 12.65 meters in hole SP-DD-21-128
- **1.03 g/t Au and 2.47 g/t Ag** over 12.00 meters in hole SP-DD-21-130
- **1.19 g/t Au and 2.14 g/t Ag** over 20.25 meters in hole SP-DD-21-134
- **1.75 g/t Au and 3.33 g/t Ag** over 17.90 meters in hole SP-DD-21-135
- **1.22 g/t Au and 1.88 g/t Ag** over 16.95 meters in hole SP-DD-21-138
- **1.31 g/t Au and 1.26 g/t Ag** over 13.80 meters in hole SP-DD-21-146
- **1.46 g/t Au and 2.65 g/t Ag** over 15.95 meters in hole SP-DD-21-148
- **7.04 g/t Au and 121.00 g/t Ag** over 1.90 meters in hole SP-DD-21-153
- **1.18 g/t Au and 3.85 g/t Ag** over 18.60 meters in hole SP-DD-21-173

Sean Roosen, CEO of Osisko Development commented, "The 2021 diamond drill campaign at our San Antonio Project was successful in defining and expanding the known zones as shown by these recent results. The Sapuchi, Golfo de Oro, and California Zones trend for approximately three kilometers and there are at least a dozen other targets at surface that remain unexplored or underexplored along a ten kilometer strike. These results will be incorporated into the mineral resource estimate and used to further determine our next steps for expansion on the project."

The San Antonio Project gold mineralization is characterized by hydrothermal breccia that forms an approximately 3,000 m long east-northeast trending mineralization corridor with the Luz del Cobre copper deposit at the east. The gold mineralization is associated with intense chlorite and carbonate alteration and is intrusion related with host sedimentary rocks. The breccia has been defined to a vertical depth of 500 meters and at an average depth of 250 meters. Drilling has occurred within the three major zones at Sapuchi, Golfo de Oro and California, over a combined strike length of 1 kilometer of the 3 kilometer breccia trend.

True widths are estimated to be 80% to 100% of reported core length intervals. Intervals not recovered by drilling were assigned zero grade. Top cuts have not been applied to high grade assays. Complete assay highlights are presented in Table 1, drill hole locations are listed in Table 2.

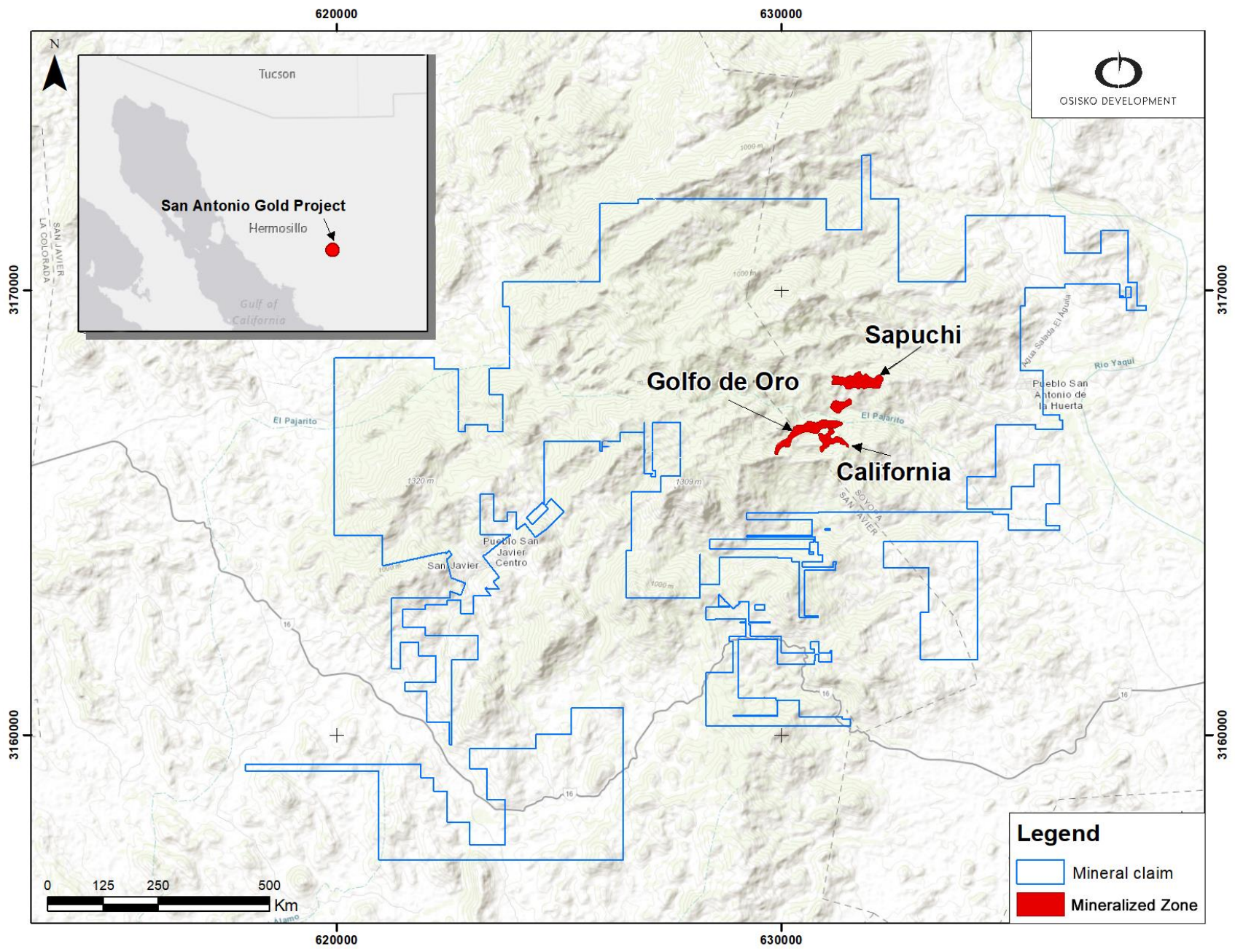


Figure 1: San Antonio Mineral Zones overview map



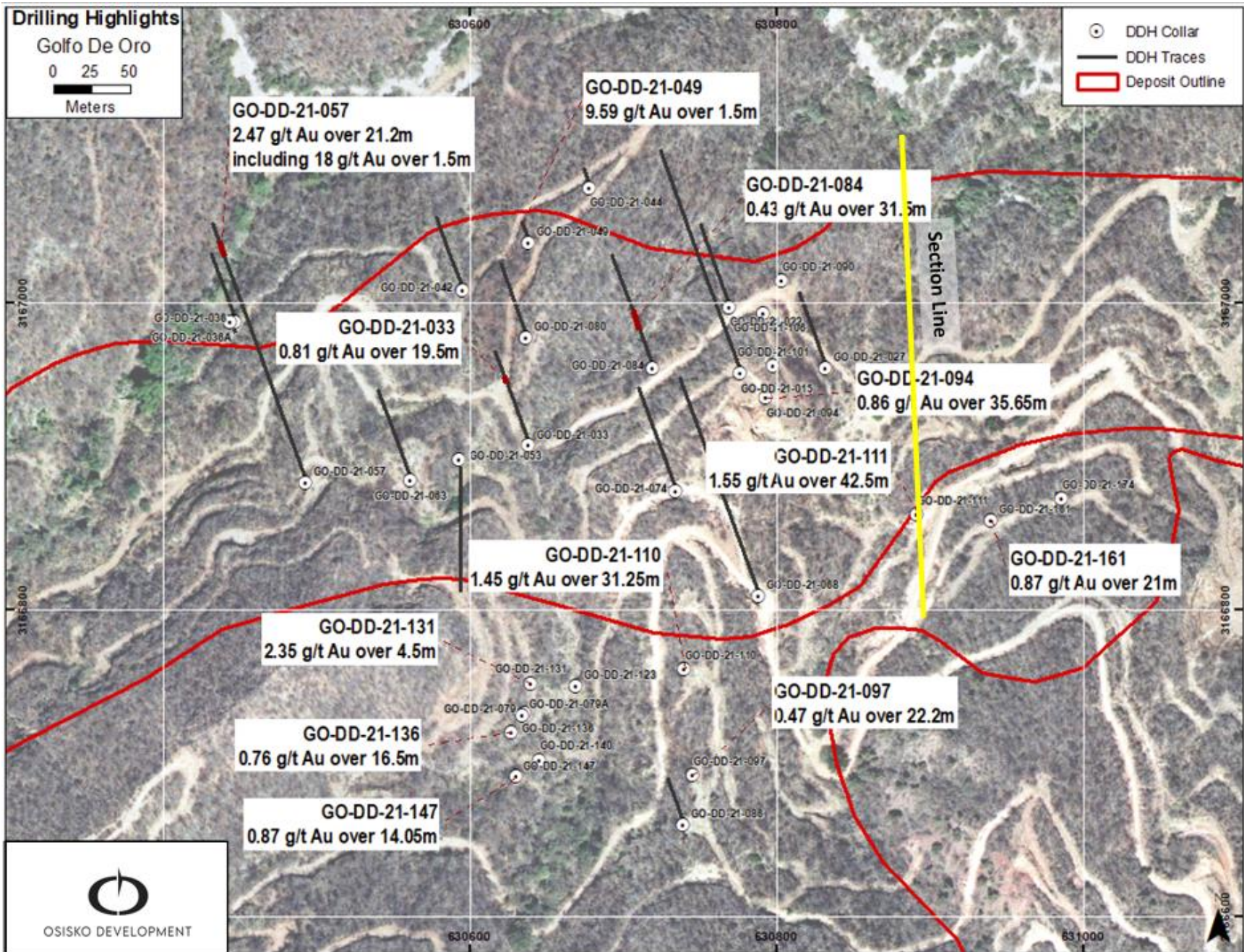


Figure 2: Golfo de Oro plan map with select drilling highlights



# GOLFO DE ORO

LOOKING EAST  
200 M ENVELOPE

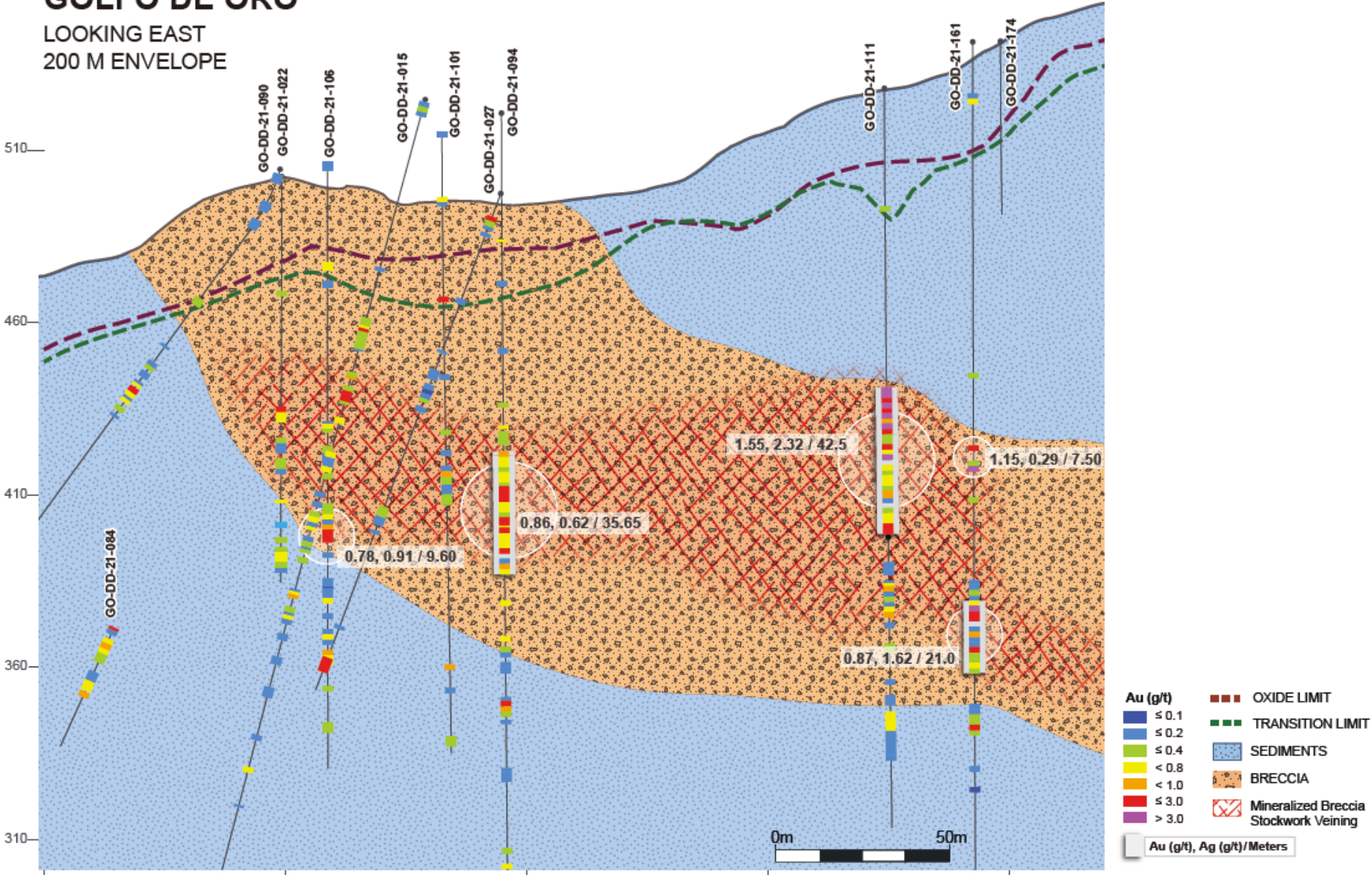


Figure 3: Golfo de Oro section select drilling highlights



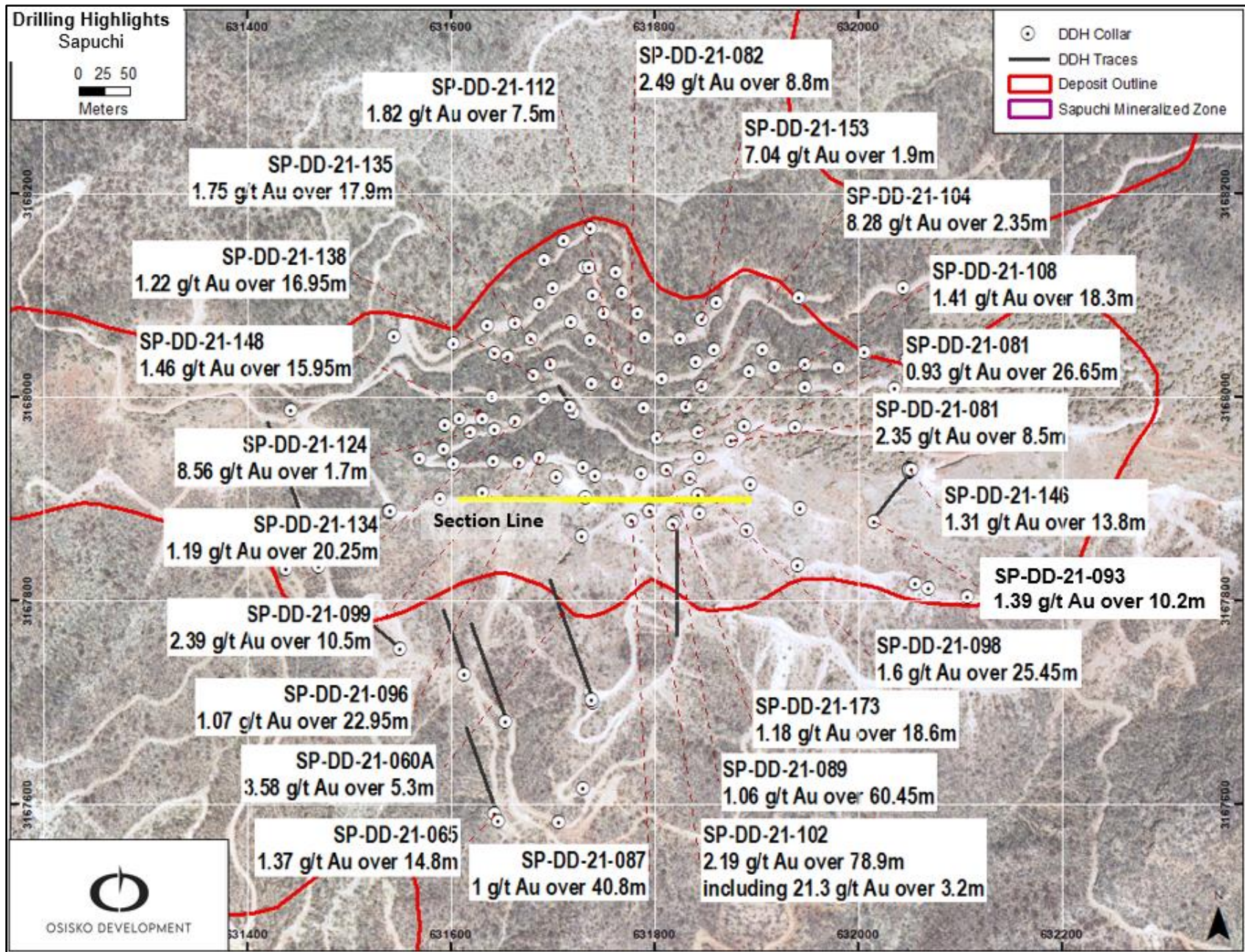


Figure 4: Sapuchi plan map with select drilling highlights



# SAPUCHI TARGET

LOOKING NORTH  
100 M ENVELOPE

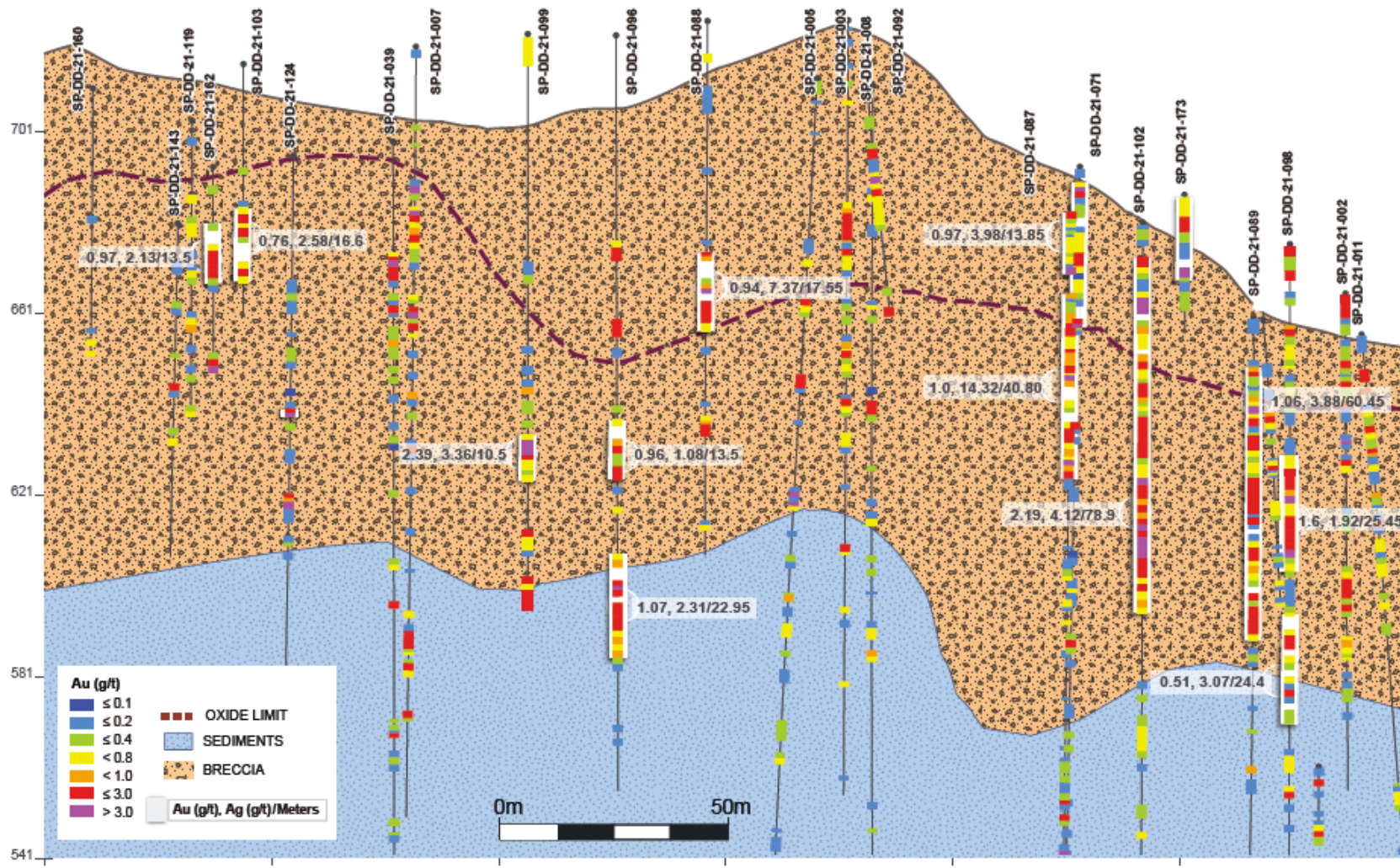


Figure 5: Sapuchi section select drilling highlights



## Qualified Persons

Maggie Layman, P.Geo. Vice President Exploration of Osisko Development, and a "qualified person" for purposes of National Instrument 43-101 – *Standards of Disclosure for Mineral Projects*, has prepared, validated, and approved the scientific and technical content in this news release.

## Quality Assurance – Quality Control

Once received from the drill and processed, all drill core samples are sawn in half, labelled and bagged. The remaining drill core is subsequently stored on site at a secured facility at the project site. Numbered security tags are applied to lab shipments for chain of custody requirements. Quality control (QC) samples are inserted at regular intervals in the sample stream, including blanks and reference materials with all sample shipments to monitor laboratory performance.

Drill core samples are submitted to ALS Geochemistry and Bureau Veritas (BV) preparation laboratory in Hermosillo and then sent to their analytical facilities in North Vancouver, British Columbia for analysis. The facilities are accredited to the ISO/IEC 17025 standard for gold assays and all analytical methods include quality control materials at set frequencies with established data acceptance criteria. The entire sample is crushed, and 200 grams is pulverized. Analytical packages for ALS and BV are AA24 and FA450 respectively. Multi Element geochemistry is also analyzed with ME MS61 at ALS and MA 200 at BV.

## About Osisko Development Corp.

*Osisko Development Corp. is uniquely positioned as a premier gold development company in North America to advance the Cariboo Gold Project and other Canadian and Mexican properties, with the objective of becoming the next mid-tier gold producer. The Cariboo Gold Project, located in central British Columbia, is Osisko Development's flagship asset with measured and indicated resources of 21.44 Mt at 4.6 Au g/t for a total of 3.2 million ounces of gold and inferred resource of 21.69 Mt at 3.9 Au g/t for a total of 2.7 million ounces of gold (see NI 43-101 Technical Report and mineral resource estimate effective October 5, 2020). The considerable exploration potential at depth and along strike distinguishes the Cariboo Gold Project relative to other development assets as does the historically low, all-in discovery costs of US \$19 per ounce. The Cariboo Gold Project is advancing through permitting as a 4,750 tonnes per day underground operation with a feasibility study on track for completion in the first half of 2022. Osisko Development's project pipeline is complemented by potential near-term production targeted from the San Antonio gold project, located in Sonora Mexico. Osisko Development began trading on the TSX Venture Exchange under the symbol "ODV" on December 2, 2020 and the Company's 14,789,373 outstanding share purchase warrants were listed on the TSX Venture Exchange under the symbol "ODV.WT" on October 25, 2021.*

## For further information, please contact Osisko Development Corp.:

Jean Francois Lemonde  
VP Investor Relations  
[jflemonde@osiskodev.com](mailto:jflemonde@osiskodev.com)  
Tel: 514-299-4926

## **Forward-looking Statements**

*Certain statements contained in this press release may be deemed "forward-looking statements" within the meaning of applicable Canadian and U.S. securities laws. These forward-looking statements, by their nature, require Osisko Development to make certain assumptions and necessarily involve known and unknown risks and uncertainties that could cause actual results to differ materially from those expressed or implied in these forward-looking statements. Forward-looking statements are not guarantees of performance. Words such as "may", "will", "would", "could", "expect", "believe", "plan", "anticipate", "intend", "estimate", "continue", or the negative or comparable terminology, as well as terms usually used in the future and the conditional, are intended to identify forward-looking statements. Information contained in forward-looking statements is based upon certain material assumptions that were applied in drawing a conclusion or making a forecast or projection, including management's perceptions of historical trends, current conditions and expected future developments, results of further exploration work to define and expand mineral resources, that exploration work will continue to show significant anomalous results in the oxide, transition and sulphide horizons and indicate continuity near surface and along strike and, open to the west along trend, that the gold mineralization continues to be associated with intense sericite and chlorite alteration and be intrusion related with host sedimentary rocks, that the breccia continues to be defined to a vertical depth of 500 meters and at an average depth of 250 meters, as well as other considerations that are believed to be appropriate in the circumstances. Osisko Development considers its assumptions to be reasonable based on information currently available, but cautions the reader that their assumptions regarding future events, many of which are beyond the control of Osisko Development, may ultimately prove to be incorrect since they are subject to risks and uncertainties that affect Osisko Development and its business. Such risks and uncertainties include, among others, risks relating to the ability of exploration activities (including drill results) to accurately predict mineralization; errors in management's geological modelling; the ability of to complete further exploration activities, including drilling; property and stream interests in the San Antonio gold project; the ability of the Corporation to obtain required approvals; the results of exploration activities; risks relating to exploration, development and mining activities; the global economic climate; metal prices; dilution; environmental risks; and community and non-governmental actions and the responses of relevant governments to the COVID-19 outbreak and the effectiveness of such responses.*

*For additional information with respect to these and other factors and assumptions underlying the forward-looking statements made in this news release concerning Osisko Development, see the Filing Statement available electronically on SEDAR ([www.sedar.com](http://www.sedar.com)) under Osisko Development's issuer profile. The forward-looking statements set forth herein concerning Osisko Development reflect management's expectations as at the date of this news release and are subject to change after such date. Osisko Development disclaims any intention or obligation to update or revise any forward-looking statements, whether as a result of new information, future events or otherwise, other than as required by law.*

**Neither the TSX Venture Exchange nor its Regulation Services Provider (as that term is defined in the policies of the TSX Venture Exchange) accepts responsibility for the adequacy or accuracy of this news release. No stock exchange, securities commission or other regulatory authority has approved or disapproved the information contained herein.**



Table 1: San Antonio Gold Project 2021 Length Weighted Drill Hole Gold and Silver Composites from Golfo de Oro and Sapuchi Zones

HOLE ID	FROM (M)	TO (M)	LENGTH (M)	AU (G/T)	AG (G/T)
GO-DD-21-015	68.75	75.55	6.80	0.53	2.15
Including	69.55	70.30	0.75	1.81	7.06
	82.60	92.05	9.45	0.58	0.69
Including	88.30	89.80	1.50	1.54	0.46
And	89.80	91.25	1.45	1.11	0.54
GO-DD-21-022	75.80	85.35	9.55	0.55	0.70
Including	77.20	78.70	1.50	1.49	0.77
	209.15	210.25	1.10	1.09	0.53
GO-DD-21-027	8.00	9.20	1.20	1.67	2.62
	144.50	148.80	4.30	1.88	0.90
GO-DD-21-033	103.00	113.50	10.50	0.59	0.84
Including	109.00	110.50	1.50	1.62	2.01
	154.90	156.40	1.50	1.97	0.97
	166.90	186.40	19.50	0.81	0.79
	200.50	203.20	2.70	0.65	0.34
	218.70	220.20	1.50	0.75	0.42
	227.20	231.70	4.50	2.21	0.57
Including	228.70	230.20	1.50	3.08	0.64
GO-DD-21-036	18.80	29.90	11.10	0.47	6.64
	24.30	25.35	1.05	1.12	0.79
	121.10	122.60	1.50	0.97	26.10
GO-DD-21-036A	Hole Abandoned				
GO-DD-21-042	3.00	4.10	1.10	1.87	0.63
	72.50	74.80	2.30	1.88	105.80
Including	72.50	74.00	1.50	2.62	155.00
	103.90	104.80	0.90	1.61	0.94
GO-DD-21-044	No Significant Assays				
GO-DD-21-049	49.10	58.10	9.00	0.56	0.99
Including	55.10	56.60	1.50	2.03	1.00
	143.60	145.10	1.50	9.59	7.78
GO-DD-21-053	44.80	45.35	0.55	1.03	6.05
	68.10	69.60	1.50	1.37	1.76
	162.30	163.35	1.05	0.89	0.05
GO-DD-21-057	161.50	176.65	15.15	0.43	0.68
	182.65	184.15	1.50	0.94	0.68
	304.35	305.85	1.50	0.99	3.10
	313.60	334.80	21.20	2.47	18.67
Including	313.60	314.85	1.25	5.61	7.91
And	324.30	325.80	1.50	1.28	19.25
And	331.80	333.30	1.50	7.56	27.70

	And	333.30	334.80	1.50	18.00	43.90
GO-DD-21-063		73.15	74.45	1.30	2.12	15.60
		98.80	100.05	1.25	0.86	0.75
GO-DD-21-068		31.80	40.20	8.40	0.56	0.39
	Including	38.75	39.60	0.85	4.16	0.67
		50.10	51.60	1.50	2.11	2.90
		171.75	182.25	10.50	0.76	0.75
	Including	180.75	182.25	1.50	4.18	1.34
		198.80	209.20	10.40	0.34	0.58
GO-DD-21-074		35.80	38.20	2.40	1.43	0.57
		98.70	100.00	1.30	1.08	0.29
		172.25	173.30	1.05	1.31	0.45
		195.00	201.20	6.20	0.74	0.86
	Including	198.20	199.70	1.50	2.13	0.43
GO-DD-21-079	Hole abandoned					
GO-DD-21-079A		2.30	7.20	4.90	1.55	1.20
		21.55	23.10	1.55	1.04	0.90
GO-DD-21-080		6.90	8.40	1.50	1.81	1.40
		79.50	86.85	7.35	0.56	0.99
	Including	82.50	84.00	1.50	1.32	2.70
		174.00	177.00	3.00	0.53	0.49
		185.10	189.00	3.90	0.65	1.12
	Including	185.10	186.00	0.90	1.08	1.00
	And	186.00	187.50	1.50	0.93	1.30
GO-DD-21-084		41.00	44.00	3.00	0.62	0.13
		65.00	96.50	31.50	0.43	0.82
	Including	69.50	71.00	1.50	1.01	0.50
	And	93.50	94.25	0.75	1.24	1.20
	And	94.25	95.00	0.75	1.47	0.70
		150.50	159.50	9.00	0.80	0.55
	Including	150.50	152.00	1.50	2.40	0.70
		168.50	173.50	5.00	0.64	1.84
GO-DD-21-086		115.50	120.70	5.20	0.70	4.98
	Including	115.50	117.00	1.50	1.36	0.20
GO-DD-21-090		67.50	72.00	4.50	0.87	1.77
	Including	67.50	69.00	1.50	1.49	0.80
GO-DD-21-094		98.85	134.50	35.65	0.86	0.62
	Including	109.00	110.50	1.50	1.80	1.40
	And	110.50	112.00	1.50	1.41	0.90
	And	112.00	113.50	1.50	1.42	0.50
	And	118.00	119.50	1.50	2.71	1.20
	And	119.50	120.25	0.75	2.43	0.50
	And	121.00	122.50	1.50	1.57	0.60
	And	127.00	128.50	1.50	1.24	0.40
		171.20	175.70	4.50	0.89	0.67



	Including	171.20	172.70	1.50	1.35	1.40
		218.45	219.95	1.50	0.72	0.50
GO-DD-21-097		112.50	114.00	1.50	1.78	11.70
		174.00	175.50	1.50	1.41	0.10
		186.00	208.50	22.50	0.43	0.64
	Including	186.00	187.50	1.50	0.82	1.00
	And	207.00	208.50	1.50	1.24	0.80
		222.30	244.50	22.20	0.47	0.36
		228.30	229.80	1.50	1.62	0.40
		243.00	244.50	1.50	1.84	0.60
GO-DD-21-101		18.90	20.30	1.40	0.73	1.00
		47.75	49.25	1.50	1.16	2.20
		98.30	108.10	9.80	0.37	0.80
	Including	98.30	99.80	1.50	0.97	0.70
		154.40	155.90	1.50	0.91	0.40
GO-DD-21-106		100.60	110.20	9.60	0.78	0.91
	Including	106.60	107.30	0.70	1.07	0.50
	And	107.30	108.70	1.40	1.33	1.60
	And	108.70	110.20	1.50	1.15	0.60
		136.90	145.80	8.90	0.49	0.53
	Including	141.40	142.90	1.50	0.90	0.50
GO-DD-21-110		45.00	46.05	1.05	0.83	5.30
		67.50	68.10	0.60	1.00	1.70
		100.25	131.50	31.25	1.45	2.05
	Including	100.25	101.75	1.50	6.13	2.60
	And	107.75	109.25	1.50	5.00	3.30
	And	109.25	110.75	1.50	3.00	2.00
	And	121.50	123.00	1.50	2.37	2.40
	And	123.80	124.75	0.95	2.16	4.60
	And	124.75	125.40	0.65	2.28	4.30
		146.50	148.95	2.45	0.64	2.82
GO-DD-21-111		86.30	128.80	42.50	1.55	2.32
	Including	86.30	87.80	1.50	4.29	2.70
	And	87.80	89.30	1.50	4.44	3.00
	And	89.30	90.80	1.50	2.58	2.90
	And	90.80	92.30	1.50	6.30	7.30
	And	93.80	95.30	1.50	3.21	5.00
	And	96.80	98.30	1.50	4.05	4.50
		143.15	153.00	9.85	0.50	3.17
GO-DD-21-123		52.35	57.95	5.60	1.76	2.21
	Including	52.35	53.00	0.65	2.17	2.10
	And	57.00	57.95	0.95	4.12	8.30
		210.35	214.30	3.95	0.66	0.54
	Including	213.35	214.30	0.95	1.50	1.00
		244.10	246.00	1.90	1.88	2.00

GO-DD-21-131		5.40	7.60	2.20	1.84	1.70
		59.30	63.80	4.50	2.35	1.93
		126.80	141.10	14.30	0.49	0.88
	Including	126.80	128.30	1.50	0.95	2.00
GO-DD-21-136		27.50	32.00	4.50	1.22	1.50
	Including	29.00	30.50	1.50	2.31	1.40
		75.50	92.00	16.50	0.76	2.79
	Including	78.50	80.00	1.50	2.52	1.50
	And	90.50	92.00	1.50	1.48	14.80
GO-DD-21-140		68.80	74.00	5.20	1.12	2.62
GO-DD-21-147		84.65	98.70	14.05	0.87	0.61
	Including	91.50	93.00	1.50	1.43	0.50
	And	93.00	93.60	0.60	3.03	1.90
	And	93.60	95.90	2.30	1.62	0.70
GO-DD-21-161		117.80	125.30	7.50	1.15	0.29
	Including	117.80	119.30	1.50	1.57	0.10
	And	123.80	125.30	1.50	3.79	0.50
		162.80	183.80	21.00	0.87	1.62
	Including	164.30	165.80	1.50	3.00	2.20
	And	165.80	167.30	1.50	2.09	1.20
	And	176.30	177.80	1.50	2.44	5.10
		198.80	200.30	1.50	1.15	1.60
GO-DD-21-174	Hole Abandoned					
SP-DD-21-060A		3.70	25.75	22.05	0.62	5.00
	Including	5.40	8.00	2.60	1.19	13.40
	And	19.85	21.65	1.80	3.33	2.25
		91.00	95.50	4.50	0.78	1.09
	Including	91.00	92.50	1.50	1.96	1.76
		177.70	183.00	5.30	3.58	2.71
	Including	177.70	179.20	1.50	1.47	6.24
SP-DD-21-061		107.05	109.70	2.65	0.85	1.56
		171.35	174.40	3.05	0.96	0.64
	Including	172.15	172.90	0.75	1.97	1.52
		257.85	259.35	1.50	0.88	0.35
SP-DD-21-065		24.80	26.30	1.50	1.39	10.05
		55.55	70.35	14.80	1.37	1.84
	Including	60.75	62.25	1.50	2.17	1.73
	And	68.85	70.35	1.50	4.41	2.68
SP-DD-21-066		24.25	41.40	17.15	0.51	4.33
	Including	25.75	27.25	1.50	1.93	4.02
	And	39.00	40.00	1.00	1.24	2.78
		48.50	53.65	5.15	0.46	1.24
SP-DD-21-067		28.45	40.50	12.05	0.49	2.67
	Including	39.30	40.50	1.20	2.17	3.45



		135.15	136.65	1.50	3.55	17.40
		170.25	180.80	10.55	1.26	0.73
	Including	177.15	178.65	1.50	1.61	0.90
	And	178.65	179.95	1.30	6.18	1.35
	And	179.95	180.80	0.85	1.78	0.80
SP-DD-21-069		16.65	21.10	4.45	0.77	1.39
	Including	19.60	21.10	1.50	1.56	1.26
		120.70	125.15	4.45	1.77	19.53
SP-DD-21-071		2.80	35.00	32.20	0.81	1.77
	Including	4.00	4.80	0.80	5.31	2.42
	And	4.80	6.20	1.40	1.77	1.45
	And	18.50	19.85	1.35	2.42	2.62
	And	19.85	21.35	1.50	1.79	2.78
	And	33.10	34.30	1.20	1.22	1.48
	And	34.30	35.00	0.70	5.09	2.07
		56.00	57.50	1.50	1.24	0.84
		104.25	105.75	1.50	1.70	0.95
		152.05	153.20	1.15	0.80	0.77
SP-DD-21-073		0.00	27.25	27.25	0.82	3.11
	Including	0.00	5.60	5.60	1.67	10.50
	And	24.25	25.75	1.50	5.24	1.47
SP-DD-21-075		43.90	46.90	3.00	3.04	8.82
		45.40	46.90	1.50	5.40	15.15
		63.35	66.00	2.65	2.40	1.38
		144.50	153.00	8.50	1.32	9.32
	Including	147.00	148.00	1.00	1.49	19.25
	And	149.65	150.45	0.80	1.46	11.45
	And	150.45	151.90	1.45	4.81	13.55
		187.60	191.80	4.20	0.79	5.72
	Including	187.60	188.15	0.55	1.83	17.35
	And	190.90	191.80	0.90	1.59	1.83
		208.80	209.70	0.90	0.82	2.70
		293.10	295.20	2.10	0.72	1.82
SP-DD-21-077		17.15	19.50	2.35	0.69	0.77
SP-DD-21-078	No Significant Assays					
SP-DD-21-081		1.30	27.95	26.65	0.93	6.76
	Including	1.30	2.20	0.90	3.19	1.20
	And	7.50	8.20	0.70	9.38	13.90
	And	24.10	25.50	1.40	2.48	13.10
	And	25.50	26.10	0.60	2.33	12.90
		35.60	44.10	8.50	2.35	3.99
	Including	36.85	38.35	1.50	5.24	1.40
	And	43.10	44.10	1.00	3.44	3.00
		48.40	49.60	1.20	2.24	1.60
		62.00	77.00	15.00	0.71	2.10

	Including	63.20	64.50	1.30	3.46	1.10
		90.30	91.20	0.90	1.08	1.10
		107.15	113.40	6.25	0.79	2.09
	Including	107.15	108.65	1.50	2.41	2.90
SP-DD-21-082		22.15	30.95	8.80	2.49	8.32
	Including	22.15	23.60	1.45	4.52	10.50
	And	23.60	25.10	1.50	7.78	5.30
SP-DD-21-083		0.00	4.90	4.90	1.19	12.48
	Including	3.00	4.90	1.90	2.18	21.60
		12.60	19.35	6.75	2.01	1.66
	Including	15.40	16.65	1.25	2.18	3.50
	And	16.65	17.25	0.60	10.10	3.00
	And	18.35	19.35	1.00	2.79	0.70
		40.25	45.45	5.20	0.71	0.91
	Including	40.25	41.35	1.10	1.02	1.20
		113.80	119.55	5.75	0.85	2.73
	Including	113.80	115.30	1.50	1.30	5.20
SP-DD-21-087		0.00	13.85	13.85	0.97	3.98
	Including	0.00	1.50	1.50	1.28	7.90
	And	12.35	13.85	1.50	4.88	9.30
		18.20	59.00	40.80	1.00	14.32
	Including	24.70	26.55	1.85	2.04	8.50
	And	26.55	27.50	0.95	1.98	89.10
	And	36.25	37.25	1.00	5.61	6.40
	And	55.00	56.00	1.00	3.61	3.20
	And	57.50	59.00	1.50	2.22	1.80
		130.25	143.30	13.05	0.77	7.22
	Including	130.25	131.00	0.75	1.73	2.70
	And	133.40	134.65	1.25	2.40	2.40
	And	141.50	142.40	0.90	4.57	1.80
SP-DD-21-088		50.40	67.95	17.55	0.94	7.37
	Including	50.40	51.15	0.75	2.96	1.73
	And	58.45	59.45	1.00	4.27	105.00
		86.60	91.10	4.50	1.77	8.40
	Including	88.50	89.60	1.10	2.65	2.22
	And	89.60	91.10	1.50	2.43	21.50
SP-DD-21-089		10.50	70.95	60.45	1.06	3.88
		98.70	100.20	1.50	0.91	6.10
SP-DD-21-092		69.30	72.30	3.00	2.05	0.95
		124.70	127.20	2.50	0.65	0.47
SP-DD-21-093		89.10	90.00	0.90	1.59	6.34
		99.00	108.00	9.00	0.69	1.92
	Including	99.00	100.50	1.50	2.00	2.05
		112.80	123.00	10.20	1.39	1.79
	Including	117.10	118.50	1.40	3.76	1.75

	And	121.50	123.00	1.50	2.69	1.52
		139.20	140.70	1.50	0.84	0.50
		154.75	159.50	4.75	2.49	51.49
	Including	155.70	157.00	1.30	7.26	145.00
SP-DD-21-096		44.75	49.25	4.50	1.39	2.08
		62.15	66.10	3.95	1.83	1.75
		84.25	97.75	13.50	0.96	1.08
	Including	90.25	91.75	1.50	2.27	1.90
	And	94.75	96.25	1.50	2.84	1.53
		114.05	137.00	22.95	1.07	2.31
	Including	121.35	122.00	0.65	4.40	10.15
	And	122.00	123.50	1.50	2.20	1.29
	And	125.00	126.50	1.50	2.28	1.90
SP-DD-21-098		0.00	7.60	7.60	0.80	3.24
	Including	0.00	2.00	2.00	1.19	4.22
	And	5.40	7.60	2.20	1.29	2.28
		17.50	34.50	17.00	0.54	2.76
	Including	18.40	19.80	1.40	1.35	2.08
		46.20	71.65	25.45	1.60	1.92
		81.10	105.50	24.40	0.51	3.07
	Including	86.00	87.50	1.50	1.73	2.51
	And	87.50	89.00	1.50	1.46	1.71
	And	98.00	99.50	1.50	1.42	1.71
		112.65	121.90	9.25	0.50	2.02
	Including	120.65	121.90	1.25	1.24	1.43
SP-DD-21-099		87.85	98.35	10.50	2.39	3.36
	Including	89.35	90.65	1.30	10.20	5.91
	And	90.65	92.15	1.50	4.26	3.39
		108.85	126.60	17.75	0.80	1.50
SP-DD-21-102		7.10	86.00	78.90	2.19	4.12
	Including	16.30	19.50	3.20	21.30	11.75
	And	35.00	36.50	1.50	2.86	37.90
	And	44.00	45.50	1.50	2.04	1.10
	And	45.50	47.00	1.50	2.09	1.15
	And	48.50	50.00	1.50	2.97	2.45
	And	56.00	57.50	1.50	3.48	3.11
	And	62.00	63.50	1.50	2.41	2.85
	And	66.30	67.60	1.30	3.40	2.45
	And	69.10	70.60	1.50	6.12	2.76
	And	70.60	72.10	1.50	7.34	6.06
	And	72.10	73.60	1.50	4.37	4.17
		110.90	116.25	5.35	0.56	5.65
		134.25	135.75	1.50	0.74	0.97
SP-DD-21-103		31.10	47.70	16.60	0.76	2.58
	Including	32.70	34.20	1.50	2.70	2.25



	And	35.70	37.20	1.50	1.30	6.94
	And	44.70	46.20	1.50	1.72	2.74
SP-DD-21-104		0.00	6.20	6.20	1.26	2.76
		22.70	25.15	2.45	3.45	2.09
	Including	24.60	25.15	0.55	7.00	3.52
		39.80	42.15	2.35	8.28	1.92
SP-DD-21-107		27.00	43.00	16.00	0.64	5.88
	Including	27.00	28.50	1.50	1.14	2.80
	And	31.25	33.00	1.75	1.04	0.81
	And	34.50	36.00	1.50	1.36	1.75
SP-DD-21-108		16.70	18.80	2.10	0.80	2.40
	Including	16.70	17.30	0.60	1.79	2.80
		30.20	48.50	18.30	1.41	1.09
	Including	30.20	31.70	1.50	4.73	1.89
	And	31.70	33.20	1.50	2.16	0.95
	And	40.60	41.40	0.80	2.14	1.45
	And	42.50	43.20	0.70	6.88	1.87
	And	43.20	44.70	1.50	3.14	0.68
	And	47.90	48.50	0.60	2.63	1.74
		66.60	72.40	5.80	1.74	5.19
SP-DD-21-112		1.65	4.60	2.95	1.14	1.22
		12.10	19.60	7.50	1.82	2.18
	Including	15.10	16.60	1.50	2.34	1.07
	And	16.60	18.10	1.50	3.40	1.12
		36.10	37.60	1.50	1.63	1.53
		43.60	45.10	1.50	0.73	0.80
SP-DD-21-114		29.80	49.50	19.70	0.55	1.74
	Including	35.90	37.50	1.60	3.53	3.37
		63.20	75.20	12.00	0.50	0.72
	Including	63.20	64.70	1.50	1.59	1.68
	And	73.70	75.20	1.50	2.07	0.83
SP-DD-21-115		15.50	20.00	4.50	1.60	2.99
		27.50	29.00	1.50	2.17	1.27
		92.20	93.70	1.50	1.01	1.76
SP-DD-21-117	No Significant Assays					
SP-DD-21-118		6.00	9.00	3.00	0.44	1.12
		10.50	12.00	1.50	0.56	0.78
SP-DD-21-119		43.10	46.10	3.00	0.65	2.46
		63.90	64.95	1.05	0.73	5.91
SP-DD-21-120		3.85	6.00	2.15	0.56	2.88
		70.45	71.95	1.50	0.55	0.80
		142.50	154.50	12.00	0.84	1.34
	Including	144.00	145.50	1.50	3.13	1.20
	And	147.00	148.50	1.50	1.06	2.00
SP-DD-21-121		17.00	29.80	12.80	0.66	3.92

	Including	22.70	24.00	1.30	2.42	10.20
	And	27.00	28.50	1.50	1.26	4.01
		56.50	58.10	1.60	1.36	2.02
		106.60	108.05	1.45	0.87	0.84
SP-DD-21-124		55.50	57.20	1.70	8.56	4.42
	Including	56.50	57.20	0.70	16.60	5.34
		74.35	77.65	3.30	2.38	4.09
SP-DD-21-125		28.45	37.00	8.55	1.24	1.35
	Including	30.10	31.85	1.75	1.52	0.85
	And	31.85	33.35	1.50	3.25	1.96
		43.00	49.10	6.10	0.57	1.42
	Including	43.00	44.50	1.50	1.36	1.07
SP-DD-21-126		121.35	122.70	1.35	1.93	0.73
SP-DD-21-128		99.00	100.50	1.50	0.88	1.50
		169.50	182.15	12.65	0.96	2.51
	Including	169.50	170.45	0.95	2.39	2.00
	And	172.40	173.35	0.95	2.34	1.90
	And	180.65	182.15	1.50	2.01	9.60
SP-DD-21-129		30.50	34.40	3.90	2.66	22.70
	Including	30.50	32.90	2.40	4.10	5.32
		58.60	60.10	1.50	0.81	1.74
		72.10	73.60	1.50	0.82	0.74
SP-DD-21-130		19.50	31.50	12.00	1.03	2.47
	Including	24.00	25.50	1.50	2.51	8.03
	And	30.00	31.50	1.50	4.15	5.59
		39.00	47.00	8.00	0.88	7.14
	Including	42.20	43.70	1.50	2.27	31.00
	And	46.10	47.00	0.90	1.87	0.84
		83.10	87.60	4.50	0.44	0.27
SP-DD-21-133		7.20	9.00	1.80	0.73	0.84
		22.50	24.00	1.50	0.93	3.95
		46.90	48.40	1.50	0.70	0.95
SP-DD-21-134		30.25	50.50	20.25	1.19	2.14
	Including	40.00	41.50	1.50	2.48	1.46
	And	41.50	43.00	1.50	2.96	1.49
	And	44.50	46.00	1.50	2.42	1.68
		68.80	75.30	6.50	1.09	1.59
	Including	73.80	75.30	1.50	3.51	3.90
SP-DD-21-135		13.50	31.40	17.90	1.75	3.33
	Including	21.00	22.50	1.50	2.59	3.77
	And	24.00	27.00	3.00	4.50	3.20
	And	29.90	31.40	1.50	3.83	9.97
		41.50	47.50	6.00	1.99	2.58
SP-DD-21-137		0.00	3.00	3.00	1.50	2.94
SP-DD-21-138		9.00	25.95	16.95	1.22	1.88

	Including	9.00	11.20	2.20	1.80	1.09
	And	11.20	12.70	1.50	1.29	0.97
	And	15.80	17.30	1.50	6.42	1.87
		49.00	55.00	6.00	0.74	1.54
	Including	50.50	52.00	1.50	1.94	1.33
SP-DD-21-139		22.50	24.00	1.50	1.62	2.30
SP-DD-21-141		3.00	6.55	3.55	1.30	5.70
		33.00	36.85	3.85	1.72	5.95
	Including	33.00	34.50	1.50	2.73	9.99
SP-DD-21-143		0.00	3.00	3.00	0.84	1.66
		37.75	39.25	1.50	0.01	1.02
SP-DD-21-144		15.00	19.50	4.50	0.95	2.47
	Including	15.00	17.90	2.90	1.21	0.97
SP-DD-21-145	No Significant Assays					
SP-DD-21-146		48.00	52.50	4.50	0.62	7.80
		72.00	85.80	13.80	1.31	1.26
	Including	72.00	72.90	0.90	6.07	1.60
	And	73.75	74.85	1.10	4.94	0.20
	And	78.00	79.50	1.50	3.53	5.90
	And	85.15	85.80	0.65	1.29	2.60
		108.05	126.00	17.95	0.44	3.00
	Including	117.00	118.50	1.50	1.77	1.30
		143.00	160.50	17.50	0.63	3.05
	Including	147.00	148.50	1.50	1.35	2.00
	And	148.50	150.00	1.50	2.41	8.90
SP-DD-21-148		12.00	27.95	15.95	1.46	2.65
	Including	15.00	16.05	1.05	1.37	1.57
	And	21.00	22.50	1.50	1.87	13.95
	And	22.50	24.00	1.50	5.55	2.46
	And	24.00	25.50	1.50	2.03	1.09
SP-DD-21-149		37.95	39.00	1.05	0.85	1.56
SP-DD-21-150		3.00	6.00	3.00	0.56	0.79
SP-DD-21-151		10.50	12.00	1.50	0.52	0.07
SP-DD-21-152	No Significant Assays					
SP-DD-21-153		28.10	30.00	1.90	7.04	121.00
SP-DD-21-154		7.10	15.30	8.20	0.48	1.10
	Including	12.70	13.80	1.10	1.14	1.91
SP-DD-21-155		1.85	5.00	3.15	0.41	2.13
SP-DD-21-156	No Significant Assays					
SP-DD-21-157		12.00	18.00	6.00	0.68	2.19
	Including	12.00	13.50	1.50	1.48	3.25
	And	16.50	18.00	1.50	1.14	5.03
		24.50	30.00	5.50	1.29	1.38
	Including	25.55	27.00	1.45	2.29	3.30



SP-DD-21-158		0.00	7.25	7.25	0.58	1.49
	Including	5.90	7.25	1.35	1.26	1.35
		17.30	18.75	1.45	1.00	0.81
SP-DD-21-159		0.00	1.50	1.50	2.29	2.60
SP-DD-21-160		54.80	56.30	1.50	0.52	0.44
		57.45	58.60	1.15	0.45	0.25
SP-DD-21-162		12.00	25.50	13.50	0.97	2.13
	Including	18.00	19.50	1.50	2.11	1.56
	And	19.50	21.00	1.50	1.55	2.86
	And	21.00	22.50	1.50	2.24	3.75
	And	22.50	24.00	1.50	1.31	3.19
		40.50	45.00	4.50	2.08	8.30
	Including	42.00	43.50	1.50	2.31	3.20
	And	43.50	45.00	1.50	3.57	15.80
SP-DD-21-163		6.00	9.00	3.00	1.44	1.59
		13.00	15.00	2.00	0.78	5.80
		24.00	26.65	2.65	0.86	0.97
SP-DD-21-164		88.50	91.50	3.00	0.69	2.25
SP-DD-21-166		4.50	7.50	3.00	1.19	2.07
		14.95	16.45	1.50	1.37	8.25
		19.80	22.80	3.00	0.73	1.06
SP-DD-21-167	No Significant Assays					
SP-DD-21-168		4.80	6.00	1.20	0.40	2.71
		9.65	10.75	1.10	0.70	1.81
		20.90	22.40	1.50	0.64	1.78
SP-DD-21-169	No Significant Assay					
SP-DD-21-170		12.00	15.60	3.60	0.56	0.94
	Including	12.00	12.80	0.80	1.12	1.70
SP-DD-21-171	No Significant Assays					
SP-DD-21-172	No Significant Assays					
SP-DD-21-173		0.00	18.60	18.60	1.18	3.85
	Including	4.40	6.45	2.05	1.22	1.67
	And	6.45	7.70	1.25	1.72	3.36
	And	15.60	16.80	1.20	5.56	3.10
	And	16.80	17.70	0.90	6.43	4.12

Table 2: Drill Hole Locations and Orientations

HOLE ID	EASTING	NORTHING	ELEVATION	DIP	AZ	DEPTH
GO-DD-21-015	630777	3166954	525	75	340	600
GO-DD-21-022	630770	3166997	505	75	340	226
GO-DD-21-027	630833	3166957	498	70	340	155
GO-DD-21-033	630639	3166907	512	75	340	255
GO-DD-21-036	630448	3166987	504	70	340	142
GO-DD-21-036A	630445	3166987	504	70	160	22
GO-DD-21-042	630596	3167008	499	70	340	150
GO-DD-21-044	630679	3167075	500	85	340	157
GO-DD-21-049	630639	3167039	507	85	340	171
GO-DD-21-053	630594	3166898	526	60	180	174
GO-DD-21-057	630494	3166883	567	60	340	361
GO-DD-21-063	630562	3166884	543	80	340	368
GO-DD-21-068	630789	3166809	558	60	340	304
GO-DD-21-074	630735	3166877	552	70	340	213
GO-DD-21-079	630637	3166733	547	90	0	33
GO-DD-21-079A	630635	3166731	544	90	0	49
GO-DD-21-080	630638	3166977	522	75	340	201
GO-DD-21-084	630720	3166957	509	65	340	189
GO-DD-21-086	630740	3166660	599	85	340	375
GO-DD-21-090	630804	3167014	503	90	0	119
GO-DD-21-094	630794	3166938	522	90	0	250
GO-DD-21-097	630746	3166692	597	90	0	246
GO-DD-21-101	630799	3166959	515	90	0	180
GO-DD-21-106	630792	3166993	507	90	0	176
GO-DD-21-110	630741	3166761	585	90	0	171
GO-DD-21-111	630892	3166862	527	90	0	214
GO-DD-21-123	630670	3166750	544	90	0	328
GO-DD-21-131	630641	3166752	546	90	0	141
GO-DD-21-136	630628	3166720	551	90	0	92
GO-DD-21-140	630646	3166702	554	90	0	75
GO-DD-21-147	630631	3166691	559	90	0	99
GO-DD-21-161	630941	3166858	542	90	0	261
GO-DD-21-174	630987	3166872	542	90	0	50
SP-DD-21-060A	631740	3167702	627	60	340	255
SP-DD-21-061	631472	3167833	622	55	340	266
SP-DD-21-065	631644	3167591	567	90	0	97
SP-DD-21-066	631822	3167877	659	60	180	225
SP-DD-21-067	631648	3167584	567	60	340	197
SP-DD-21-069	631655	3167681	569	60	340	207
SP-DD-21-071	631789	3167925	696	90	0	214
SP-DD-21-073	631615	3167728	561	60	340	135
SP-DD-21-075	631722	3167985	682	90	0	308
SP-DD-21-077	631552	3167752	567	60	310	150
SP-DD-21-078	631463	3167692	567	60	290	194
SP-DD-21-081	631876	3167957	682	90	0	143

SP-DD-21-082	631777	3168027	637	90	0	153
SP-DD-21-083	631809	3168018	635	90	0	179
SP-DD-21-087	631779	3167879	682	90	0	159
SP-DD-21-088	631705	3167921	726	90	0	118
SP-DD-21-089	631819	3167875	659	90	0	128
SP-DD-21-092	631743	3167923	713	90	0	171
SP-DD-21-093	632017	3167877	674	90	0	180
SP-DD-21-096	631688	3167941	725	90	0	167
SP-DD-21-098	631836	3167920	679	90	0	174
SP-DD-21-099	631668	3167936	724	90	0	127
SP-DD-21-102	631797	3167888	680	90	0	146
SP-DD-21-103	631604	3167935	716	90	0	56
SP-DD-21-104	631804	3167960	671	90	0	141
SP-DD-21-107	631693	3167999	684	90	0	179
SP-DD-21-108	631844	3167966	670	90	0	146
SP-DD-21-112	631765	3168013	649	90	0	125
SP-DD-21-114	631718	3167990	682	80	330	147
SP-DD-21-115	631848	3168011	645	90	0	100
SP-DD-21-117	631737	3168127	625	90	0	71
SP-DD-21-118	631712	3168153	608	90	0	50
SP-DD-21-119	631595	3167949	705	90	0	66
SP-DD-21-120	632052	3167926	715	70	220	156
SP-DD-21-121	631907	3168046	645	90	0	112
SP-DD-21-124	631621	3167965	699	90	0	132
SP-DD-21-125	631919	3168030	646	90	0	91
SP-DD-21-126	631983	3168029	646	90	0	152
SP-DD-21-128	632053	3167927	715	90	0	186
SP-DD-21-129	632007	3168044	646	90	0	102
SP-DD-21-130	631644	3167968	695	90	0	120
SP-DD-21-133	631657	3168039	648	90	0	84
SP-DD-21-134	631665	3167976	691	90	0	84
SP-DD-21-135	631699	3168032	665	90	0	54
SP-DD-21-137	631860	3168047	631	90	0	94
SP-DD-21-138	631683	3168021	667	90	0	84
SP-DD-21-139	632052	3167930	715	90	0	70
SP-DD-21-141	631720	3168074	642	90	0	96
SP-DD-21-143	631596	3167973	689	90	0	78
SP-DD-21-144	631610	3167978	688	90	0	30
SP-DD-21-145	631680	3168057	645	90	0	33
SP-DD-21-146	632051	3167928	715	70	330	162
SP-DD-21-148	631632	3167979	687	90	0	30
SP-DD-21-149	631943	3168097	604	90	0	39
SP-DD-21-150	631693	3168135	609	90	0	72
SP-DD-21-151	631862	3168093	616	90	0	41
SP-DD-21-152	631738	3168166	608	90	0	33
SP-DD-21-153	631848	3168076	616	90	0	30
SP-DD-21-154	631764	3168122	608	90	0	30
SP-DD-21-155	631769	3168102	609	90	0	30



SP-DD-21-156	631785	3168082	610	90	0	30
SP-DD-21-157	631826	3168057	617	90	0	30
SP-DD-21-158	631792	3168058	620	90	0	32
SP-DD-21-159	631752	3168082	622	90	0	30
SP-DD-21-160	631571	3167939	711	90	0	59
SP-DD-21-162	631591	3167900	690	90	0	45
SP-DD-21-163	631702	3168107	627	90	0	36
SP-DD-21-164	632054	3167928	715	90	0	93
SP-DD-21-166	631688	3168092	629	90	0	33
SP-DD-21-167	632109	3167804	622	90	0	50
SP-DD-21-168	631665	3168073	631	90	0	30
SP-DD-21-169	631637	3168070	633	90	0	24
SP-DD-21-170	631604	3168052	641	90	0	30
SP-DD-21-171	632070	3167812	631	90	0	47
SP-DD-21-172	632057	3167817	632	90	0	56
SP-DD-21-173	631814	3167929	690	90	0	30